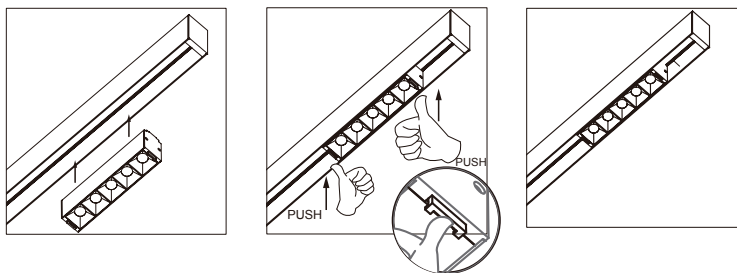
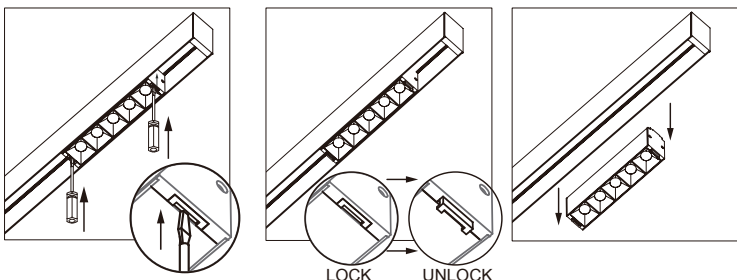


A • Installation only for GO-K



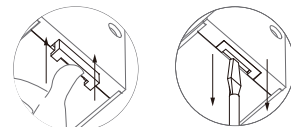
Disassemble



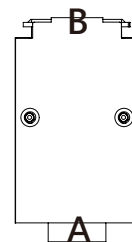
1. Before installation, please check where the rectangle button at "A" lock mechanism shall be in protruding and clip at "B" not protruding. If not, to use "T" type screwdriver to press the rectangle button of "A" to get protruding.



2. Install the lighting fixture with the track flush, and then press upward the rectangle button of "A" lock mechanism to fix fixture on track firmly.



3. For removing, to unlock it via "T" type screwdriver to press the rectangle button of "A" to get protruding and then move-out lighting fixture.

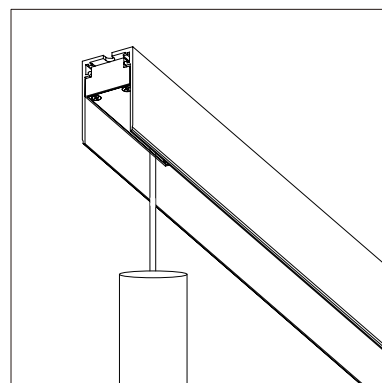
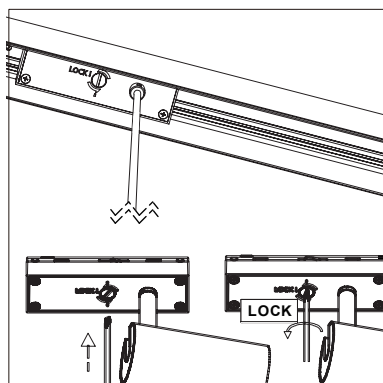
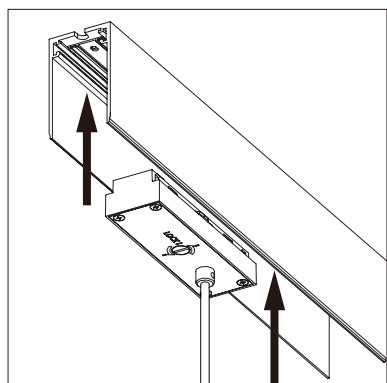


B • Installation only for GO-(GR, GL, C, S)

Assemble step 1

step 2

step 3



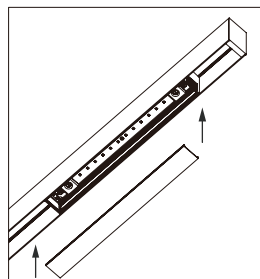
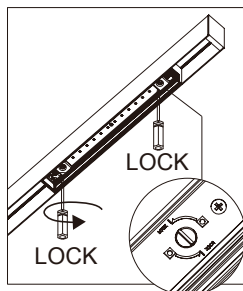
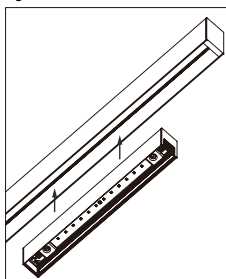
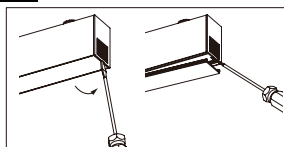
step 3

step 2

step 1

Disassemble

C • Installation only for GO-P



Disassemble

